

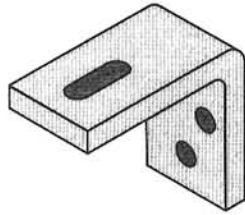


LIFTMASTER

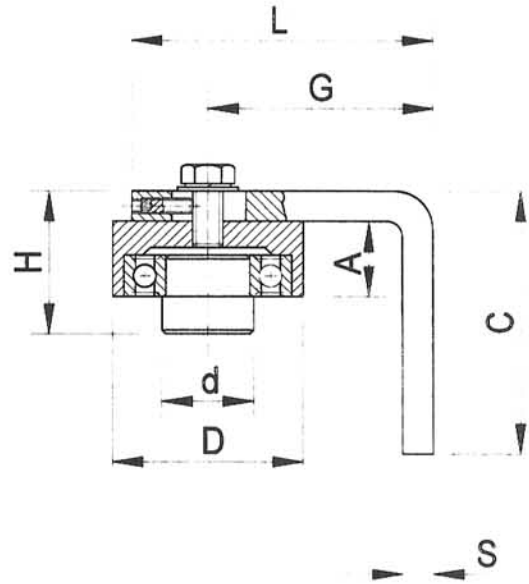
SWING GATE HARDWARE HEAVY DUTY HINGES

Made
in
AUSTRALIA

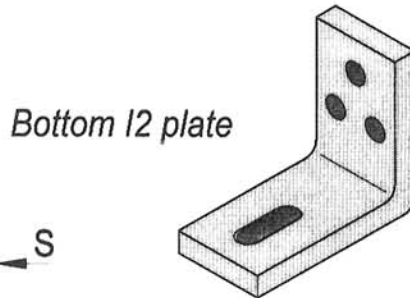
ITEM No.	D	d	A	H	L	C	S	G MIN-MAX	WEIGHT	
	∅		mm							kg
400516(S2)	50	23	20	38	80	70	8	50-60	400	
400518(S2)	70	32	25	45	100	85	10	67-82	800	



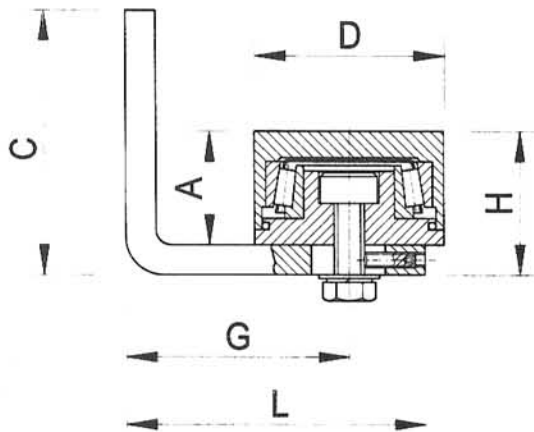
Top S2 plate



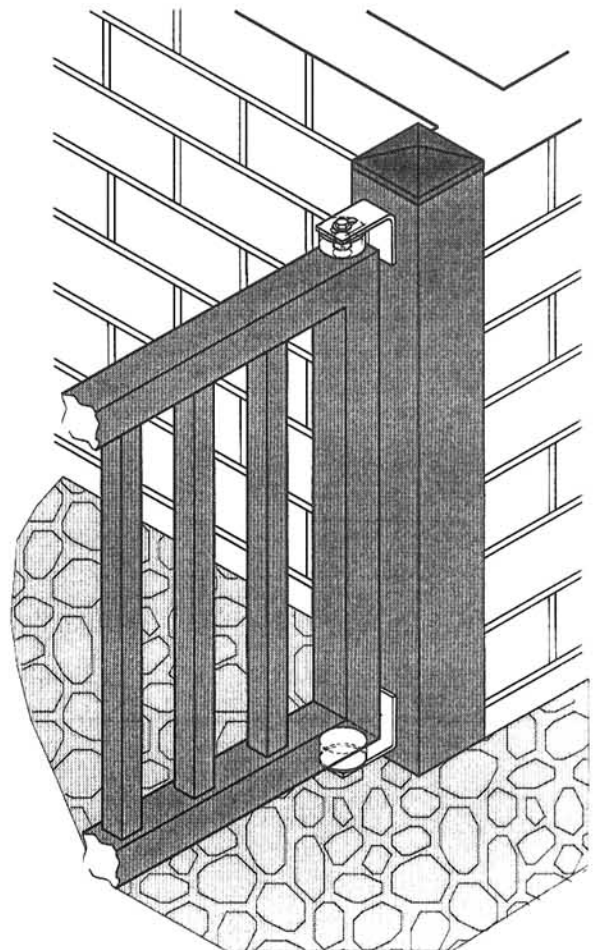
TOP HINGE



Bottom I2 plate



BOTTOM HINGE

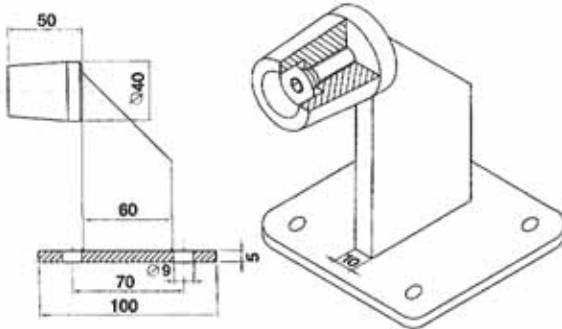
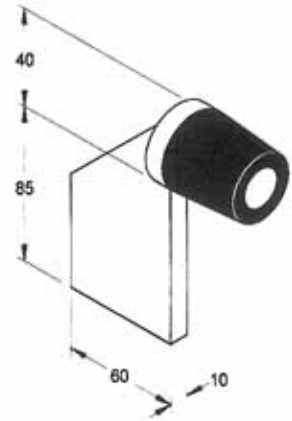


ITEM No.	D	A	H	L	C	S	G MIN-MAX	WEIGHT		
	∅		mm							kg
400515(I2)	50	32	40	80	70	8	50-60	200		
400517(I2)	70	35	45	100	80	10	67-82	500		

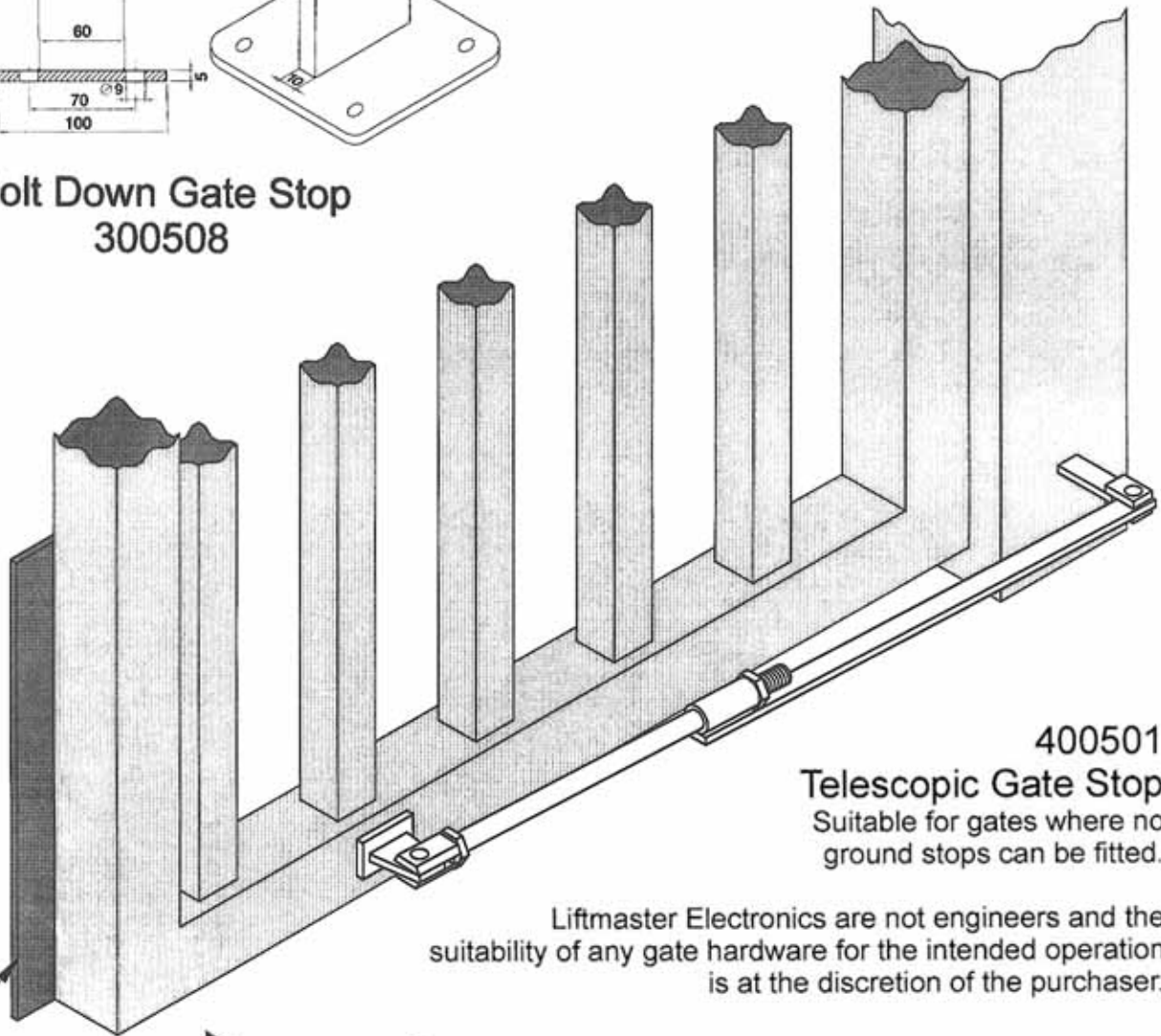
SWING GATE STOPS

Made
in
AUSTRALIA

Track Mount Gate Stop
300507



Bolt Down Gate Stop
300508



400501
Telescopic Gate Stop
Suitable for gates where no
ground stops can be fitted.

Liftmaster Electronics are not engineers and the suitability of any gate hardware for the intended operation is at the discretion of the purchaser.

— Keeper plate
required with
dual gates

ACCESSORIES

- ▶ Photo electric beams
- ▶ Vehicle Detectors
- ▶ Safety edge profile
- ▶ Emergency stop controls
- ▶ Flashing lights
- ▶ Traffic lights
- ▶ Radio & access control



LIFTMASTER ELECTRONICS PTY LTD

A.B.N 58 000 266 035

PO BOX 54 Alexandria NSW Australia 1435

Phone: (61 2) 9699 9654 Fax: (61 2) 9699 8443

As Liftmaster Electronics policy is one of constant improvement, we reserve the right to alter any part of these specifications without notice and without incurring any obligation.